

Convegno tra geologia e geofisica 2017

XIV Workshop di Geofisica

V Giornata di Formazione

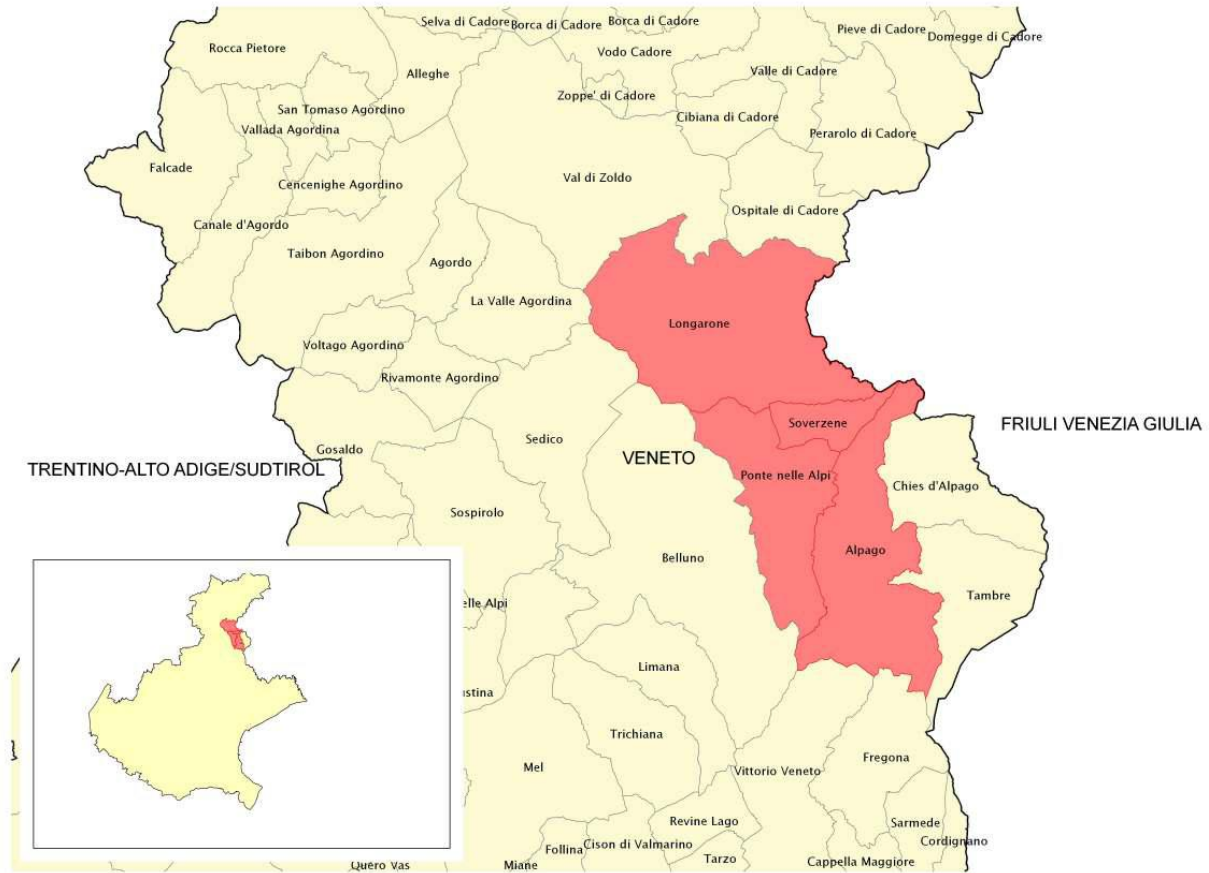
*Micro Zonazione sismica: un approccio integrato tra
geologia e geofisica*

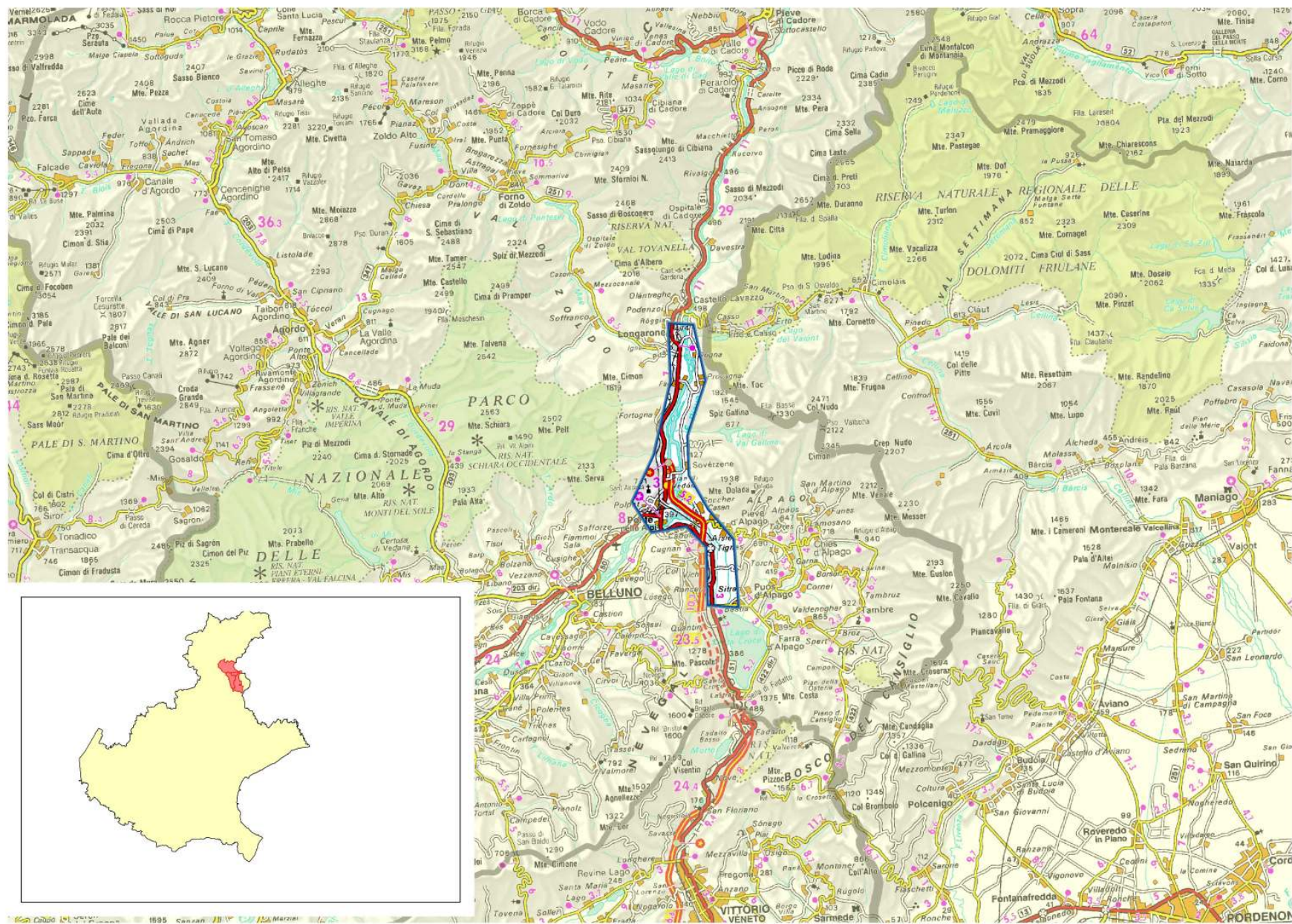
**Il contributo della Microzonazione Sismica nella ricostruzione
della struttura del sottosuolo: l'esempio della Valle del Piave tra
Longarone e Ponte nelle Alpi (Belluno)**

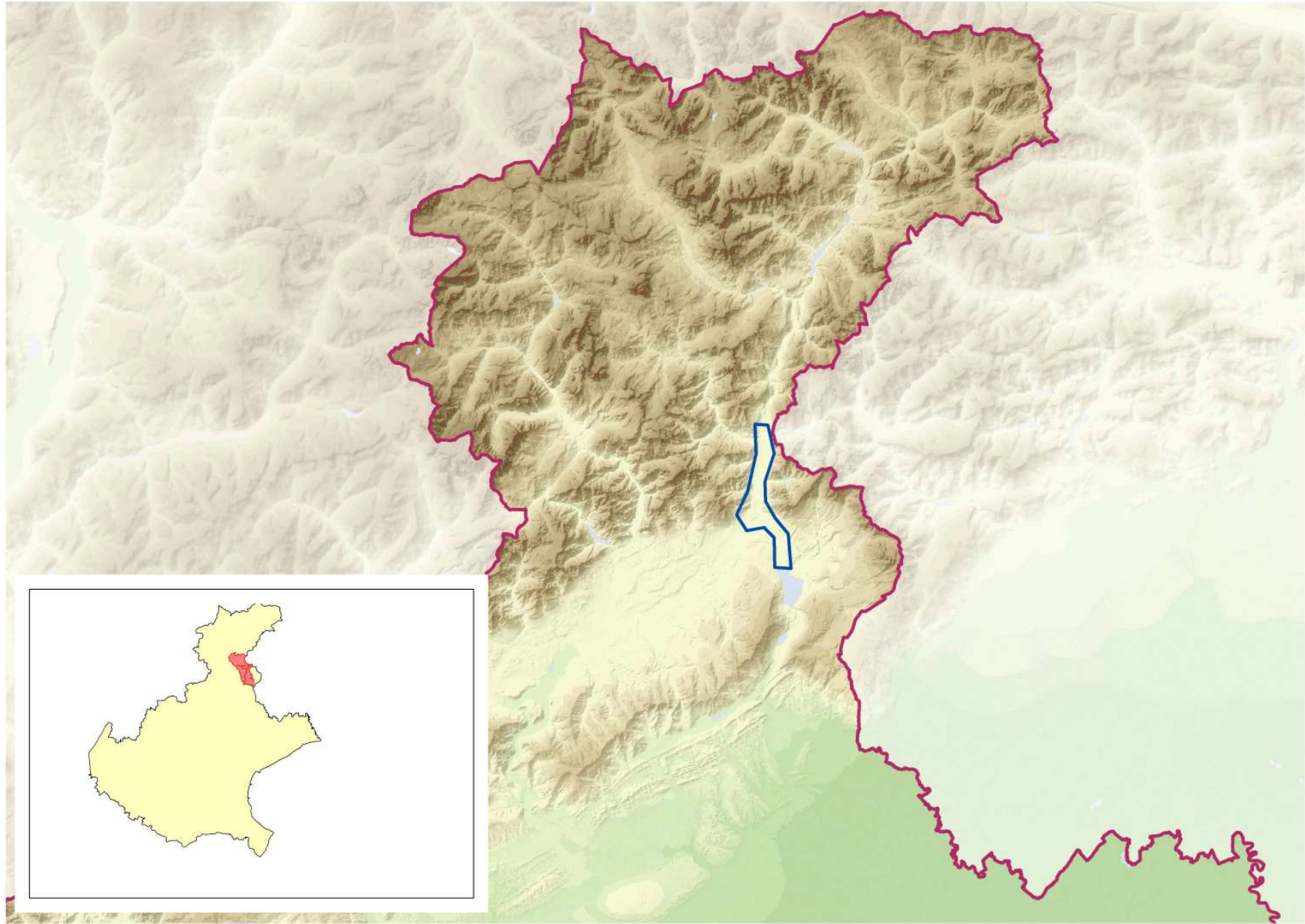
Fondazione Museo Civico Rovereto - 30 novembre 2017

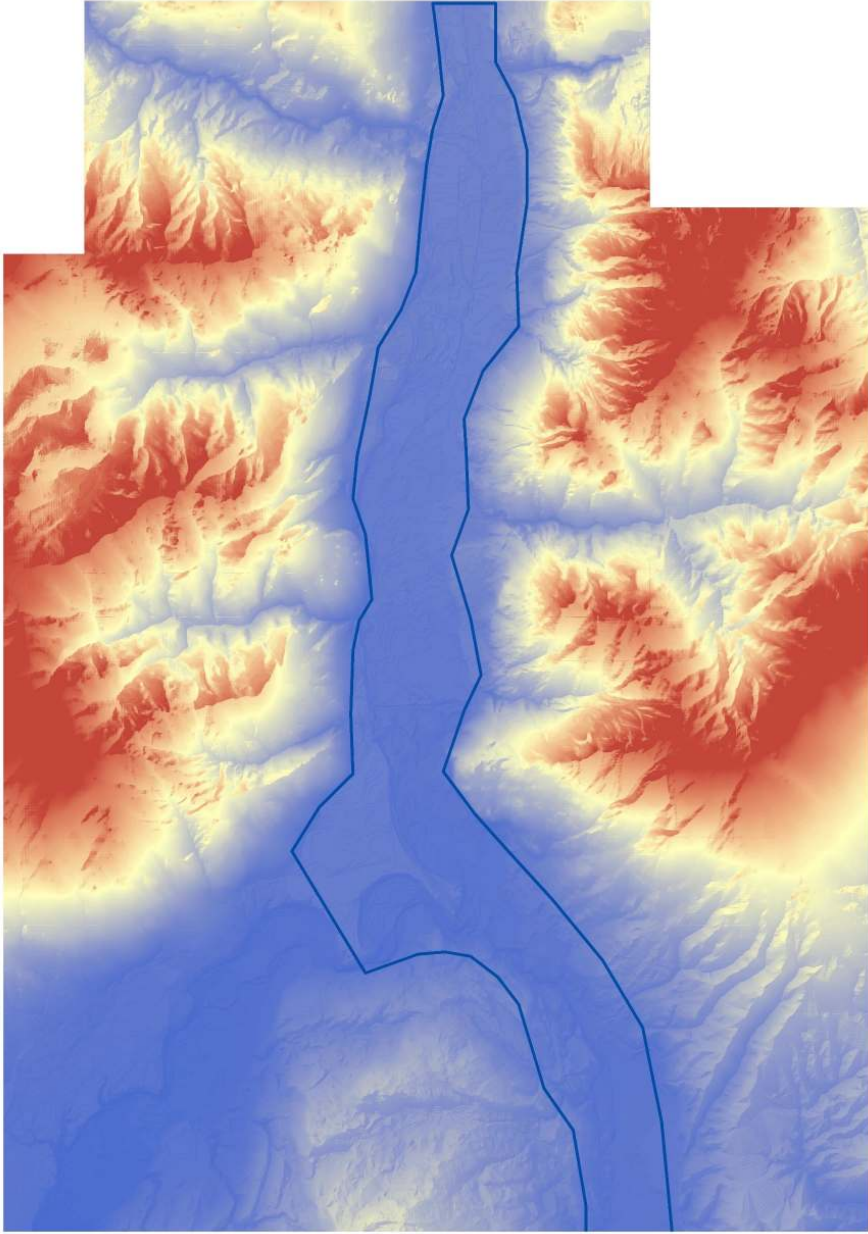
Dr. Francesco Marinoni (Albignasego - Padova)

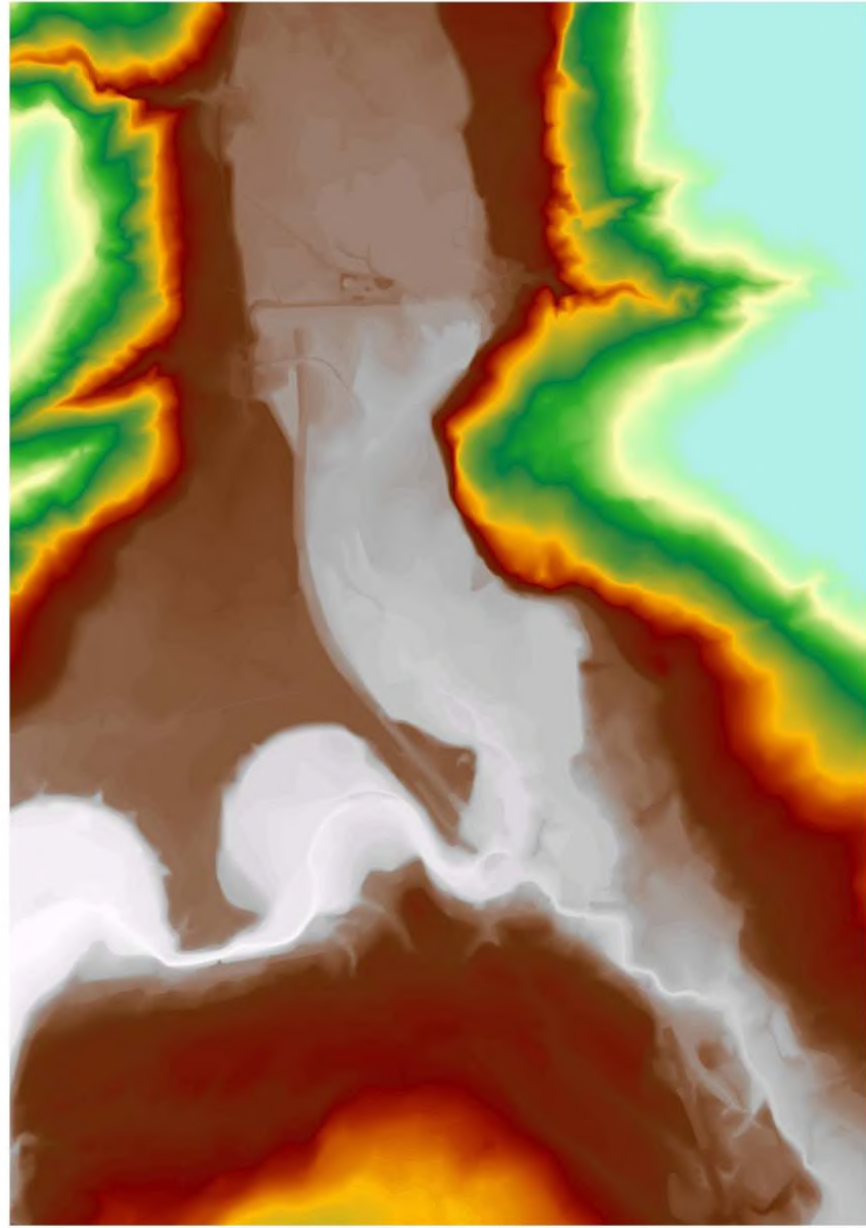
Dr. Maurizio Olivotto (Santa Giustina - Belluno)











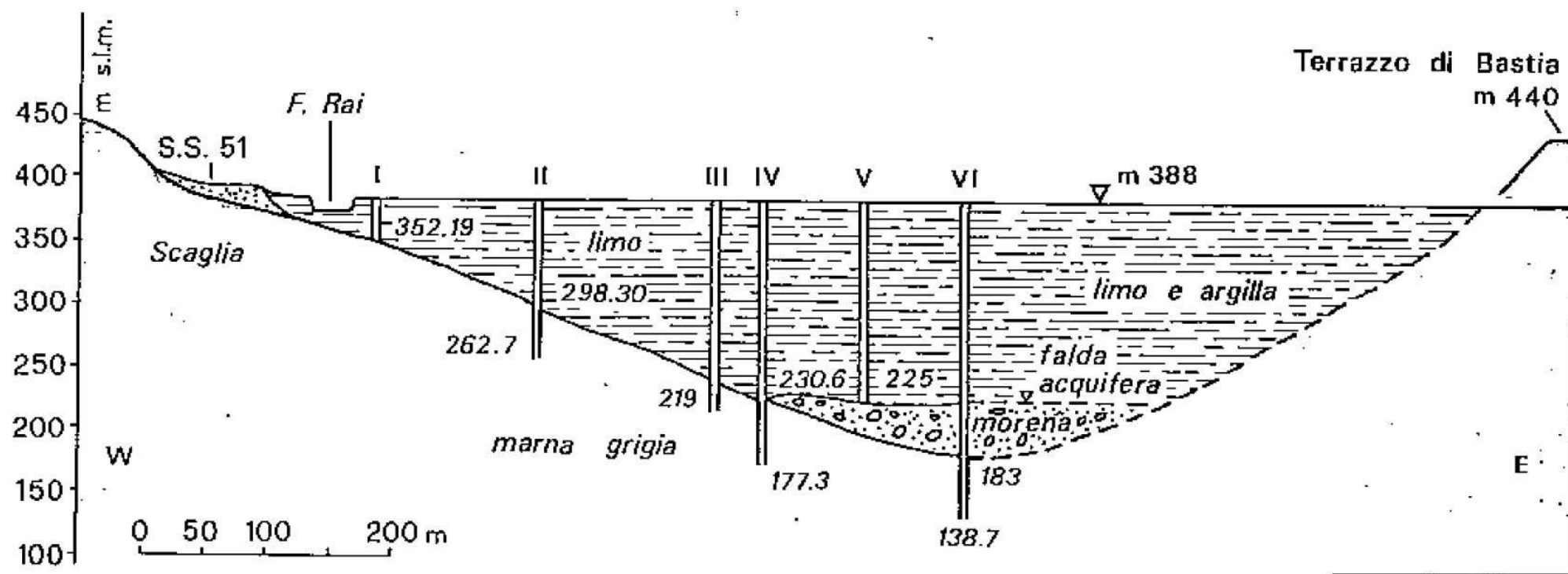
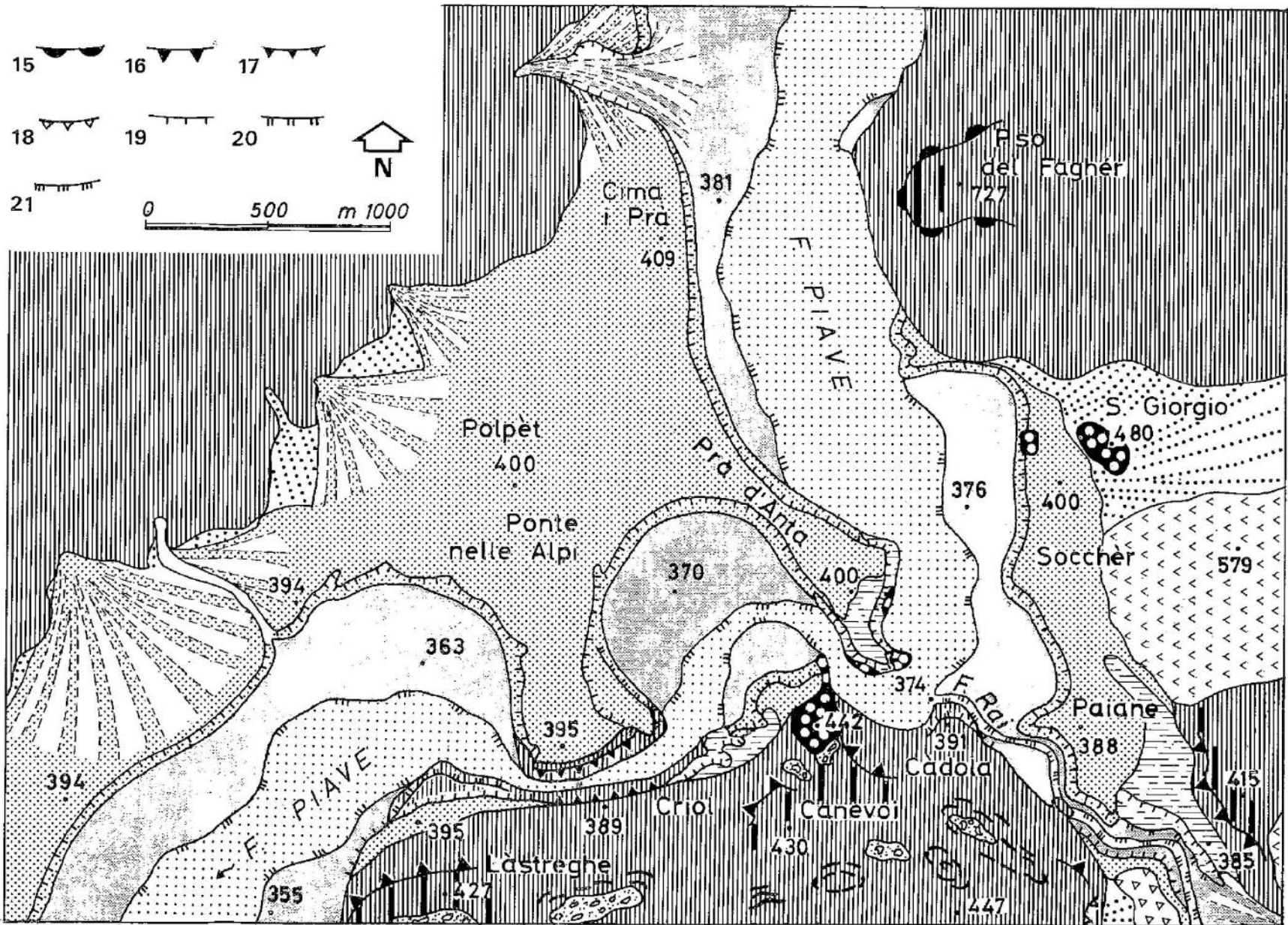
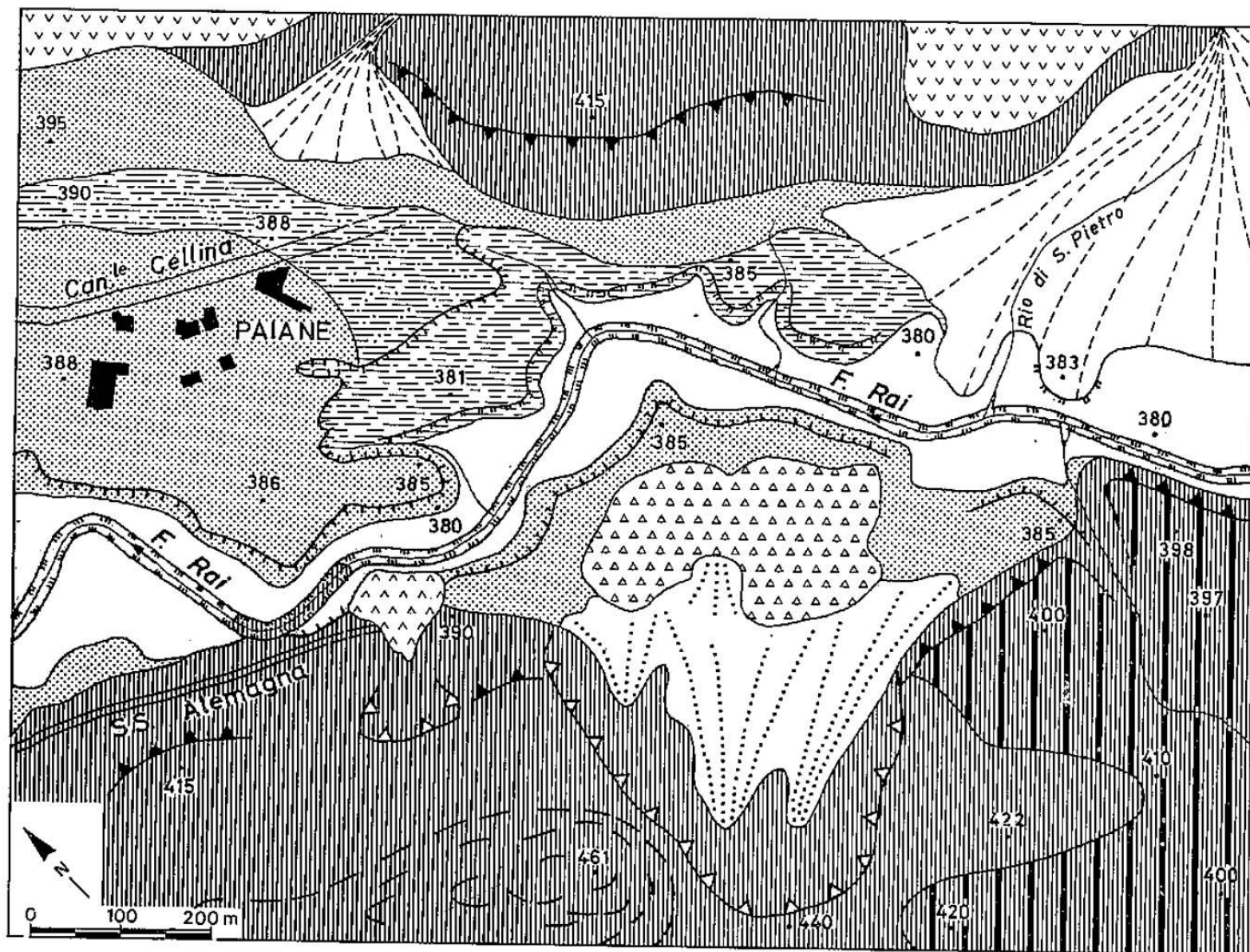


Fig. 5 - Interpretazione geomorfologica dei sondaggi geognostici ICOS effettuati presso il lago di S. Croce (loc. La Secca) (G.B. PELLEGRINI).





- | | | | |
|--|---|--|----|
| | 1 | | 9 |
| | 2 | | 10 |
| | 3 | | 11 |
| | 4 | | 12 |
| | 5 | | 13 |
| | 6 | | 14 |
| | 7 | | 15 |
| | 8 | | |





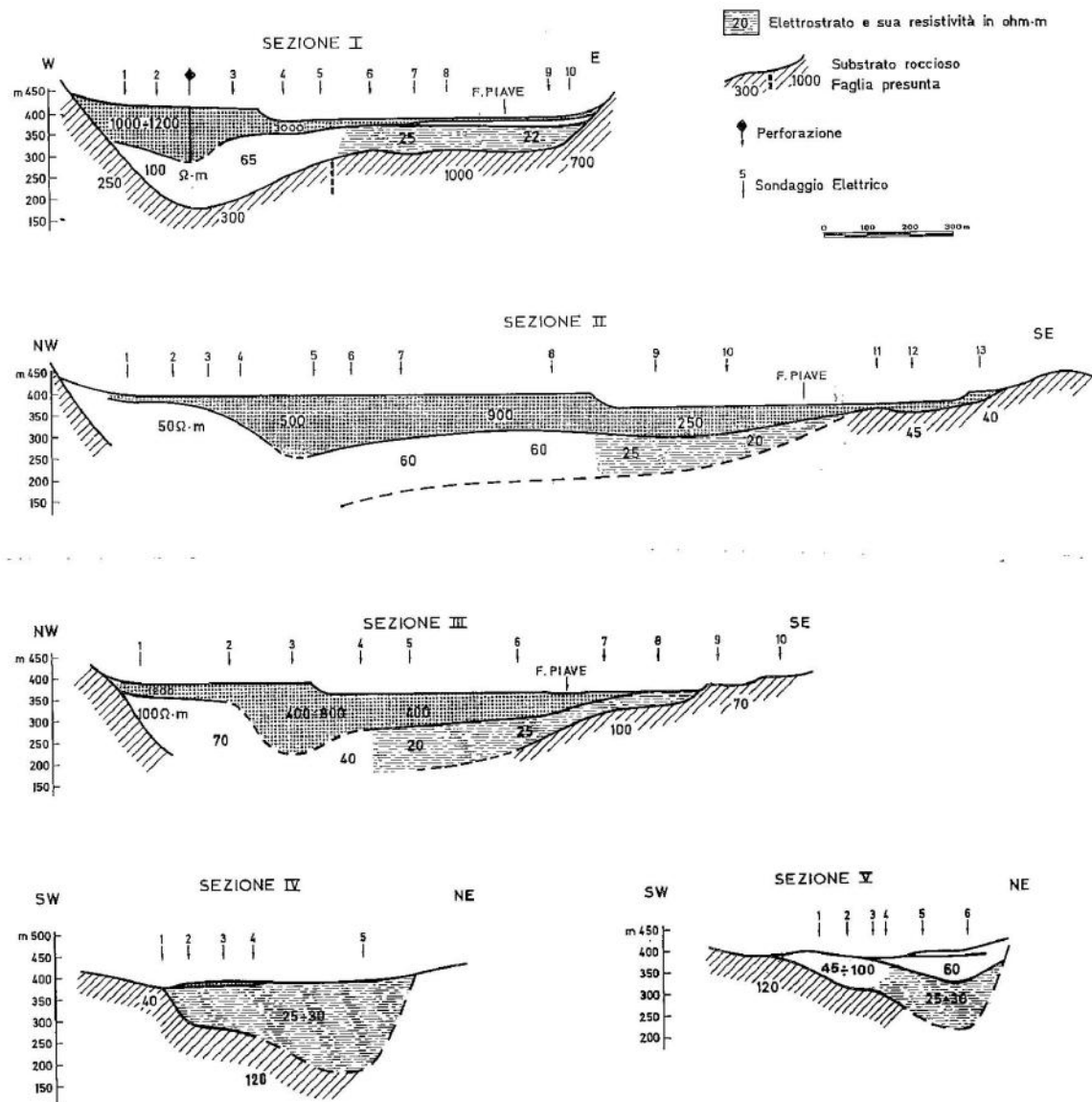


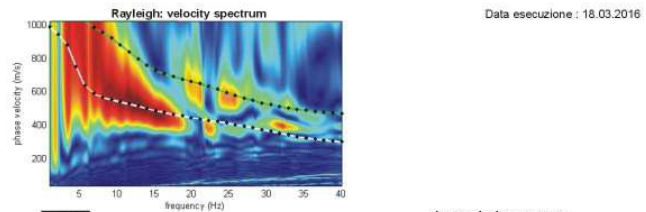
Fig. 14 - Sezioni elettriche (R. ZAMBRANO). Le sezioni I-III si riferiscono alla valle del Piave; le sezioni IV-V a quella di S. Croce.

VALORI Vs a PONTE NELLE ALPI

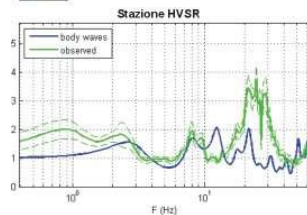
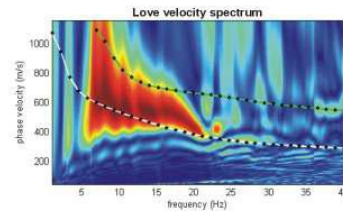
COMUNE DI PONTE NELLE ALPI - INDAGINE LINEARE N° 025040L4

Profilo MASW - Località Polpet

ANALISI CONGIUNTA ONDE DI RAYLEIGH, ONDE DI LOVE E HVSR

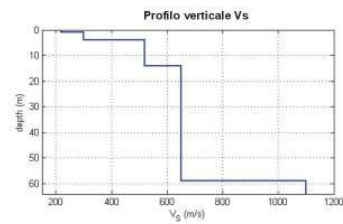


www.wilmasw.com



INTERPRETAZIONE

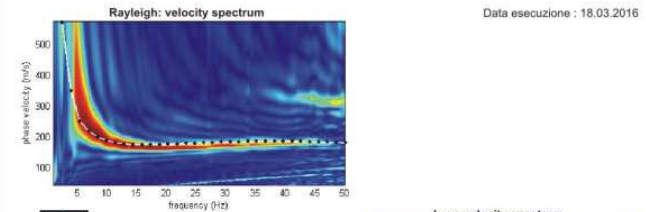
spessore (m)	Vs (m/s)
1	220
3	300
10	520
45	650
	1100



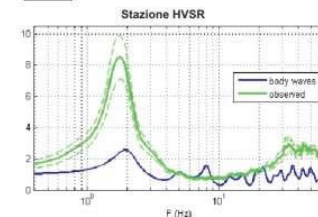
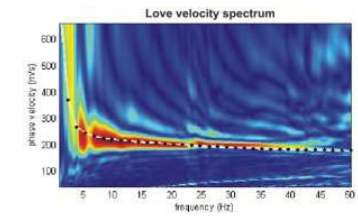
COMUNE DI PONTE NELLE ALPI - INDAGINE LINEARE N° 025040L6

Profilo MASW - Località Soccher

ANALISI CONGIUNTA ONDE DI RAYLEIGH, ONDE DI LOVE E HVSR

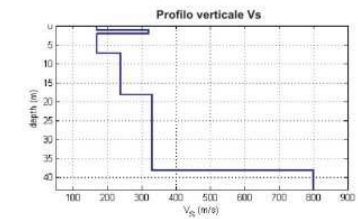


www.wilmasw.com

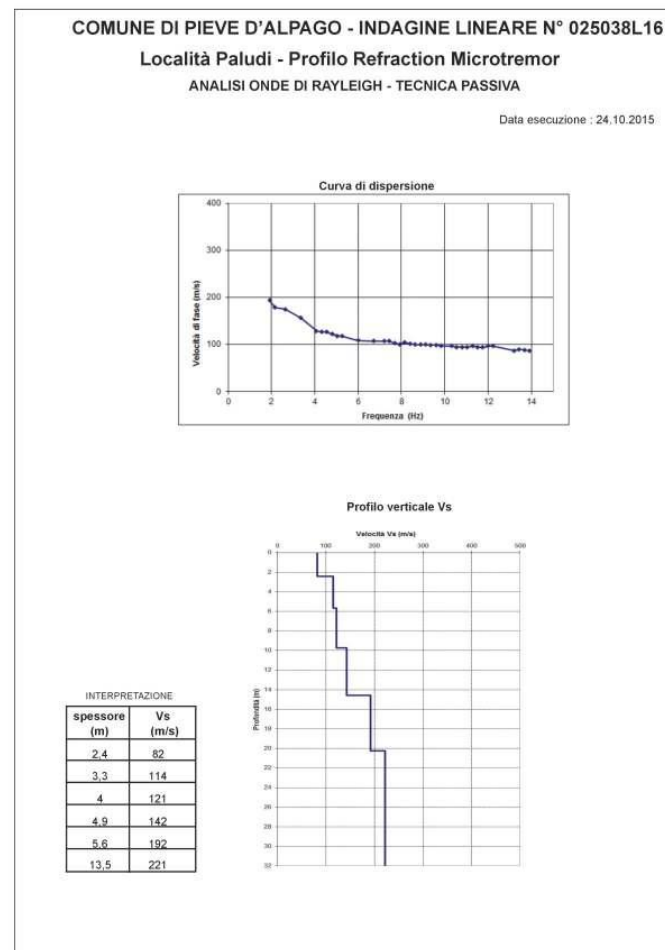
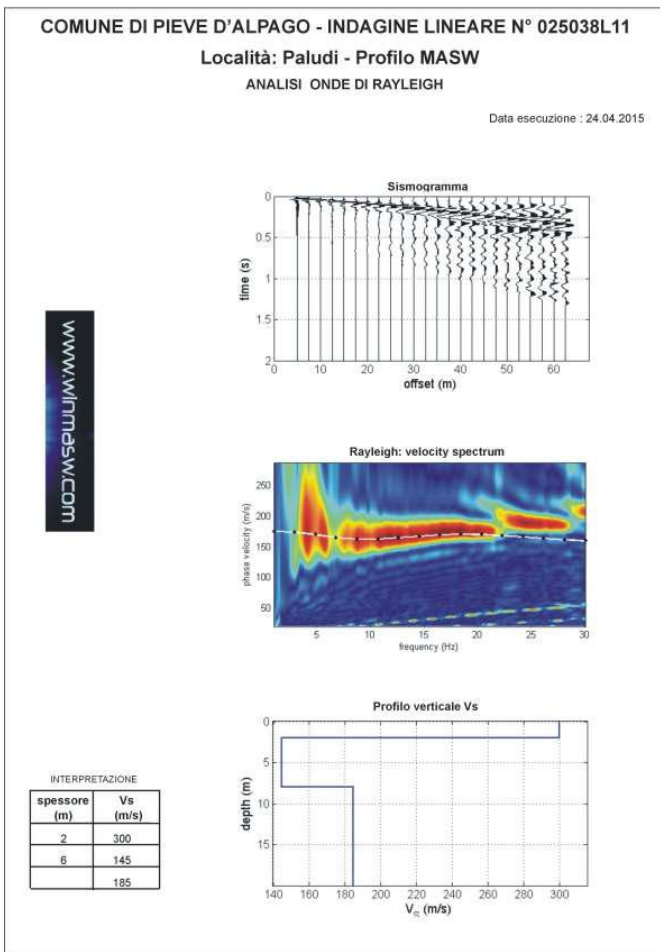


INTERPRETAZIONE

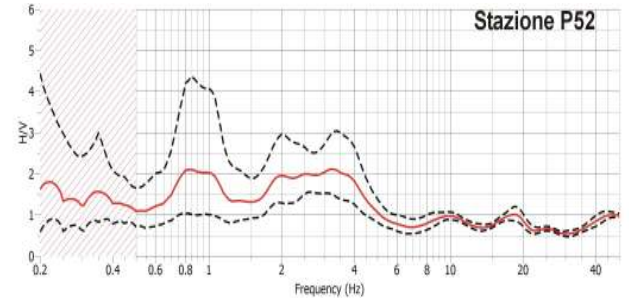
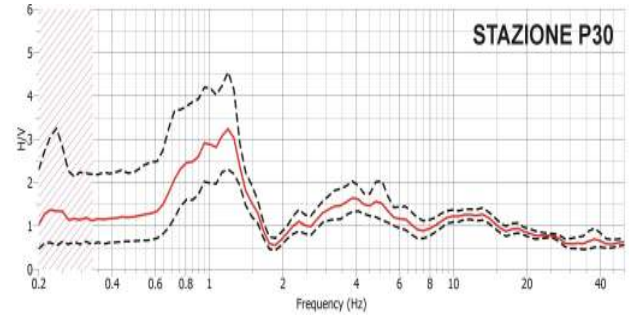
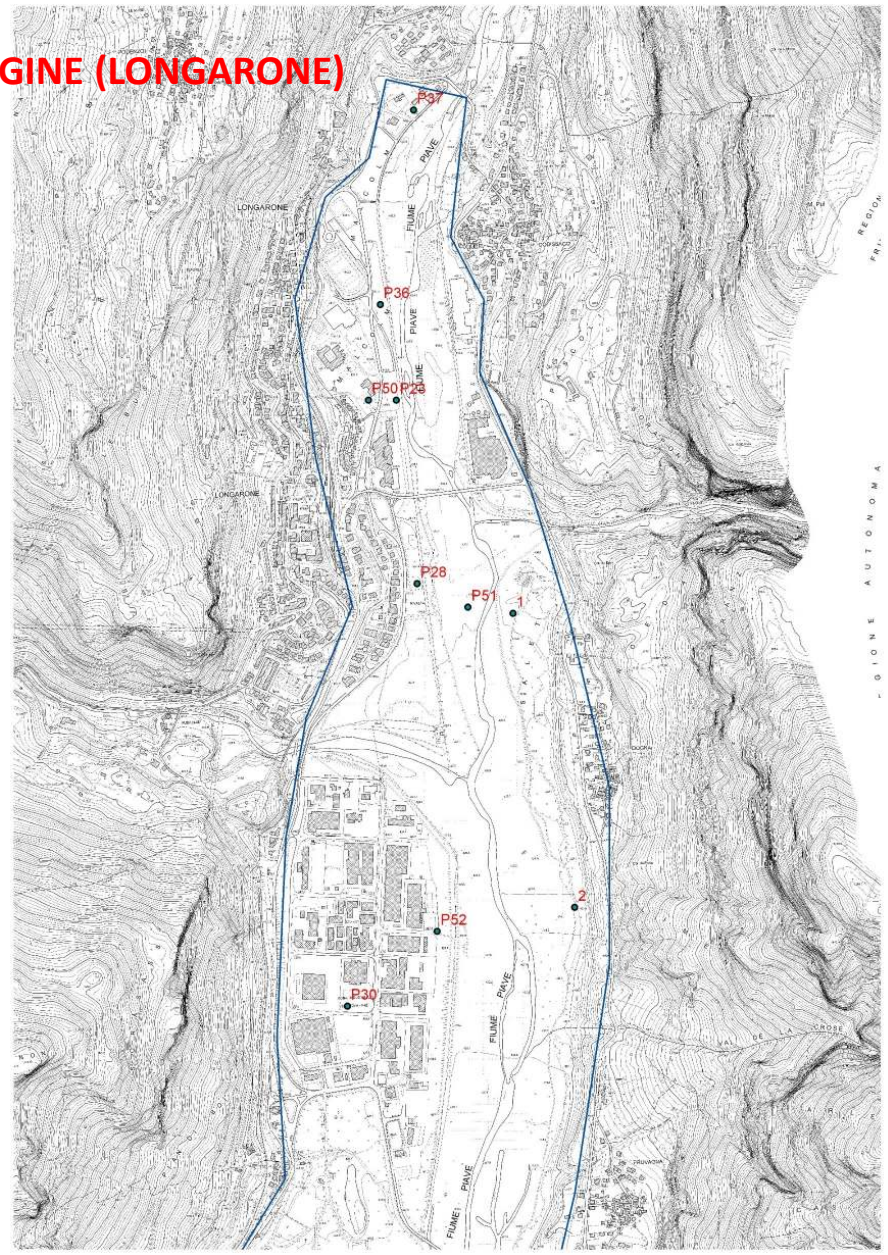
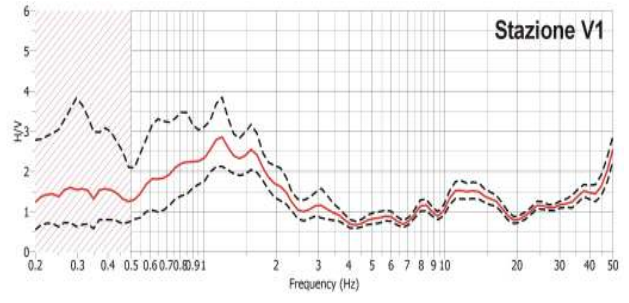
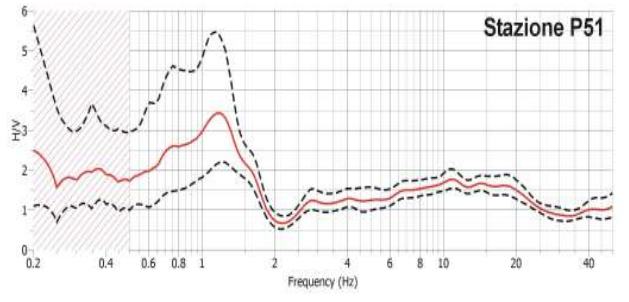
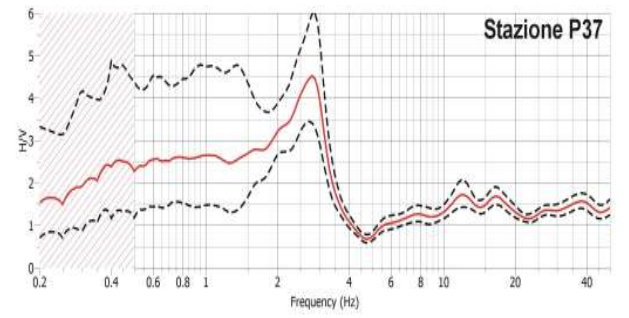
spessore (m)	Vs (m/s)
1,2	170
1	320
5	170
11	240
20	330
	800

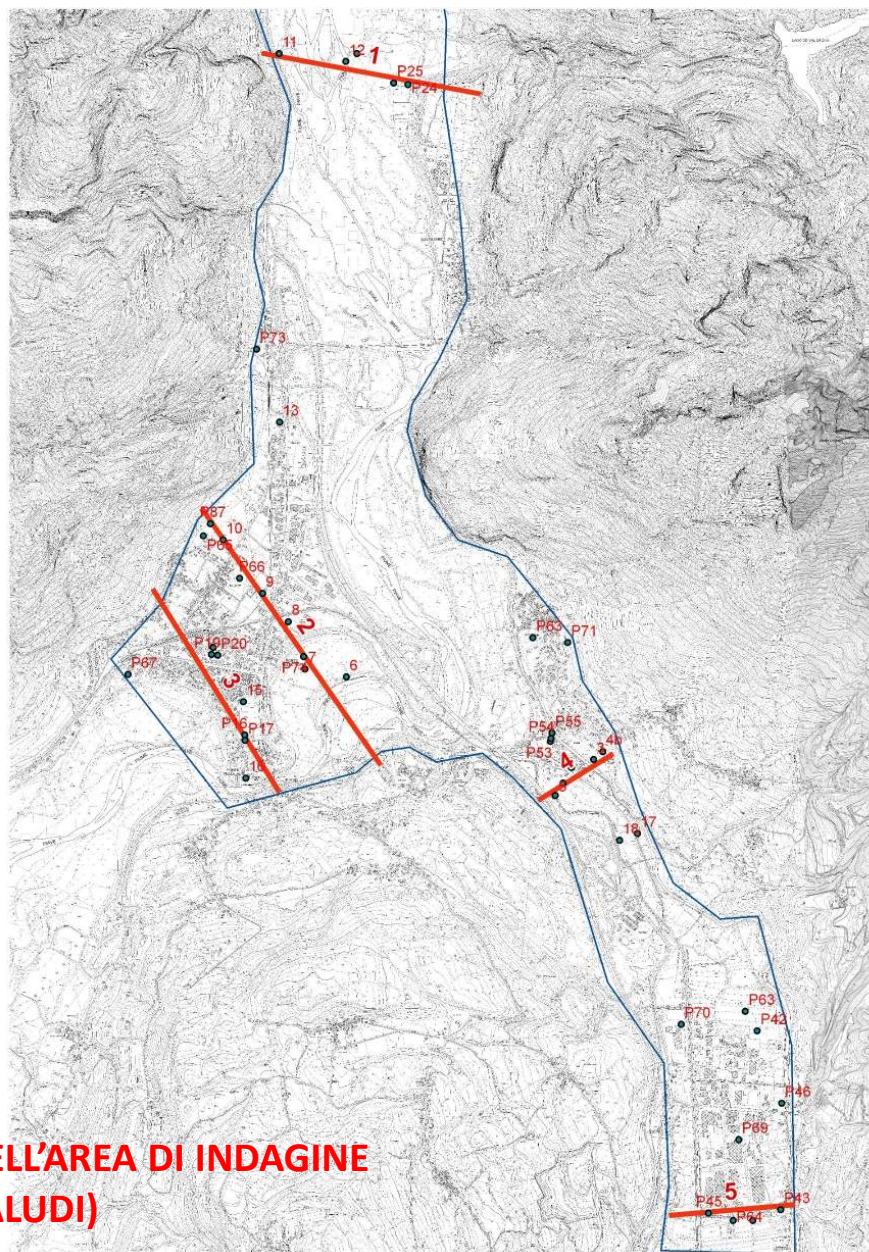


VALORI Vs a PALUDI



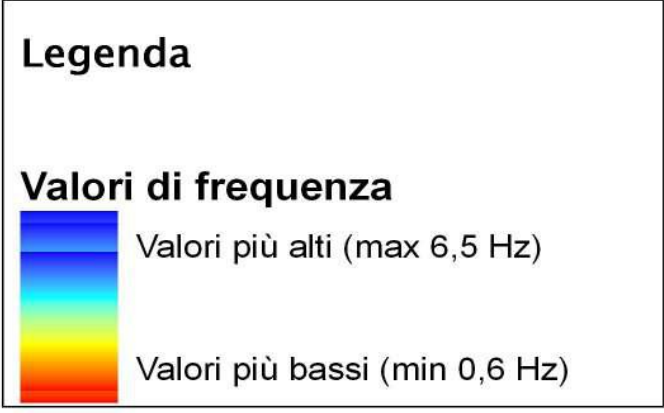
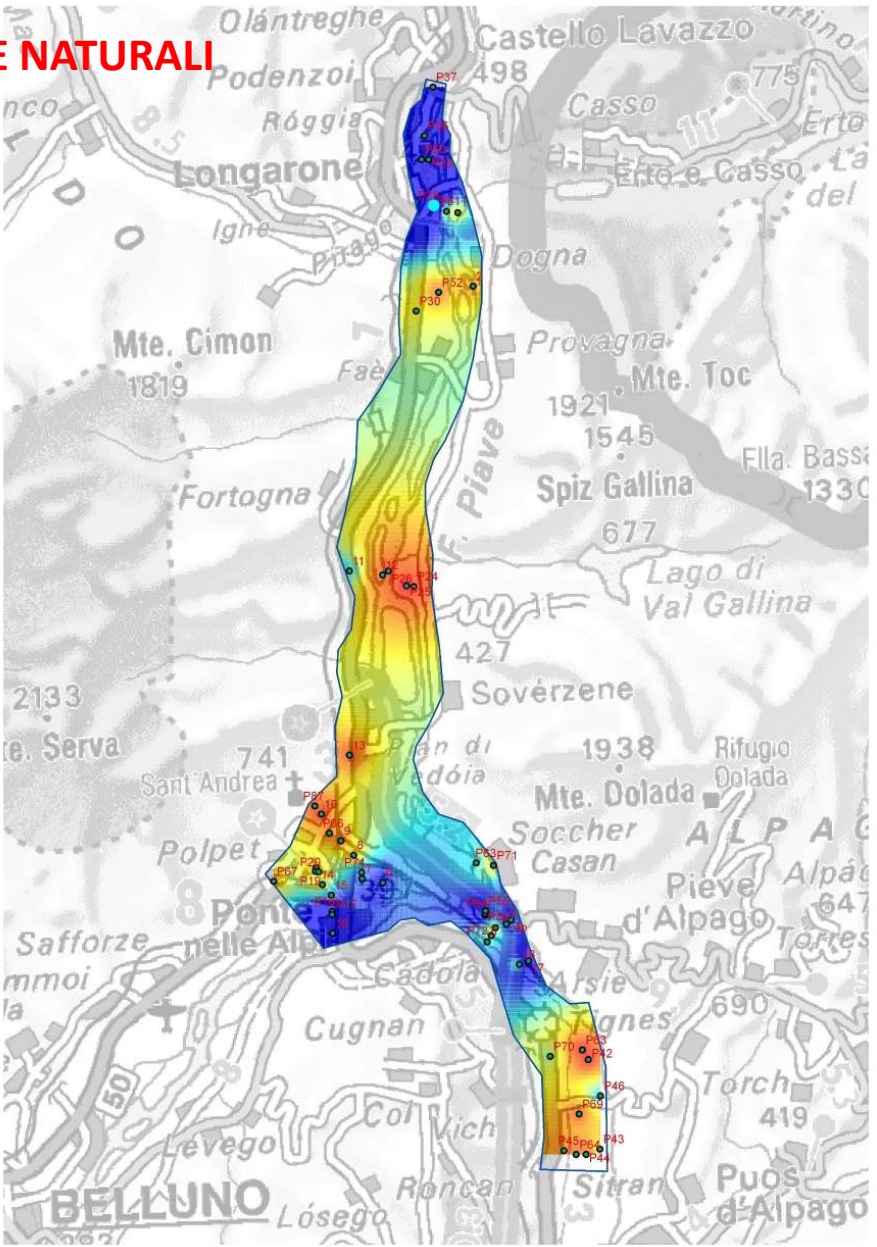
SETTORE NORD DELL'AREA DI INDAGINE (LONGARONE)



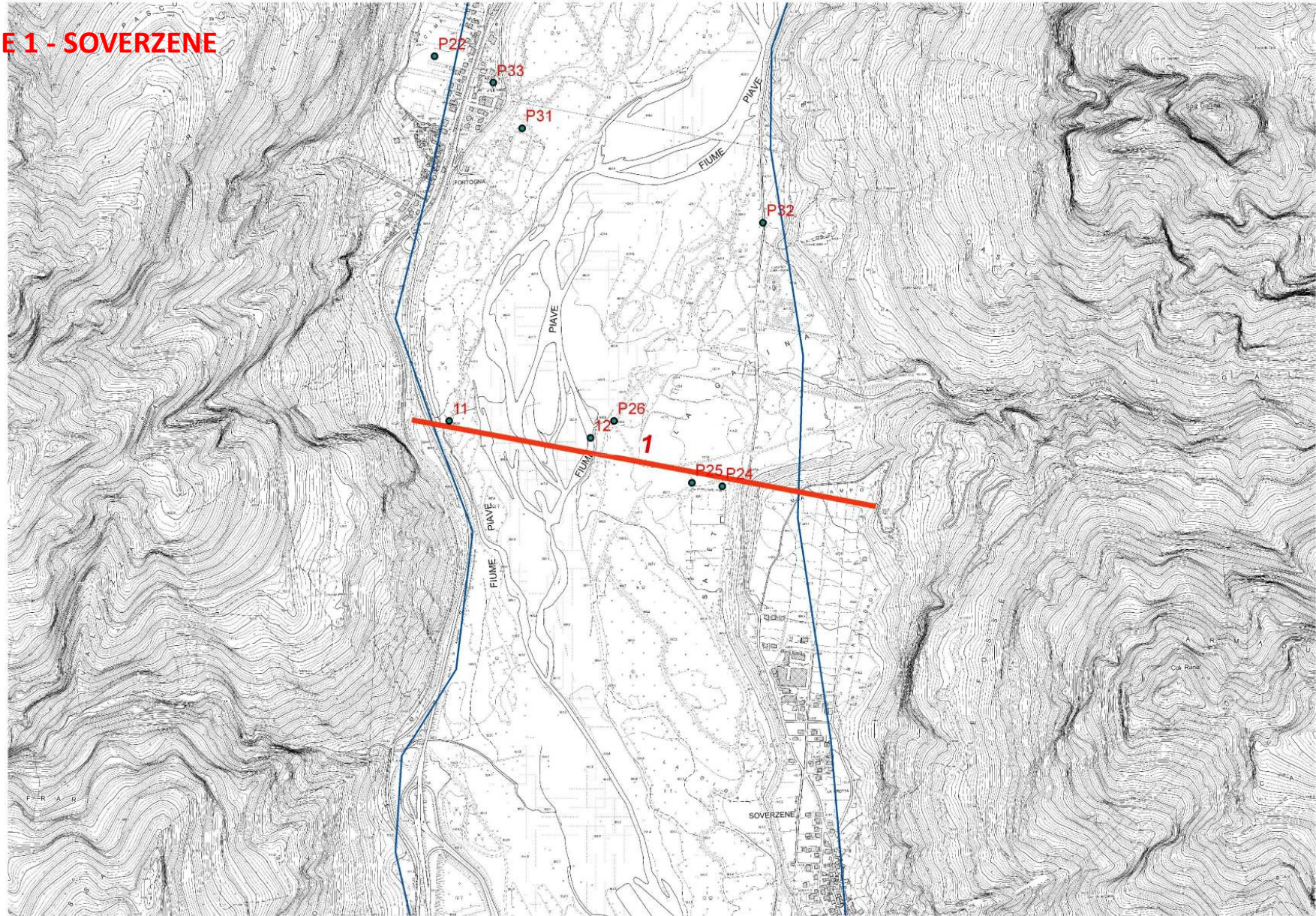


**SETTORE CENTRO-MERIDIONALE DELL'AREA DI INDAGINE
(SOVERZENE, PONTE NELLE ALPI, PALUDI)**

CARTA DELLE FREQUENZE NATURALI



SEZIONE 1 - SOVERZENE



Sezione N. 1 - SOVERZENE

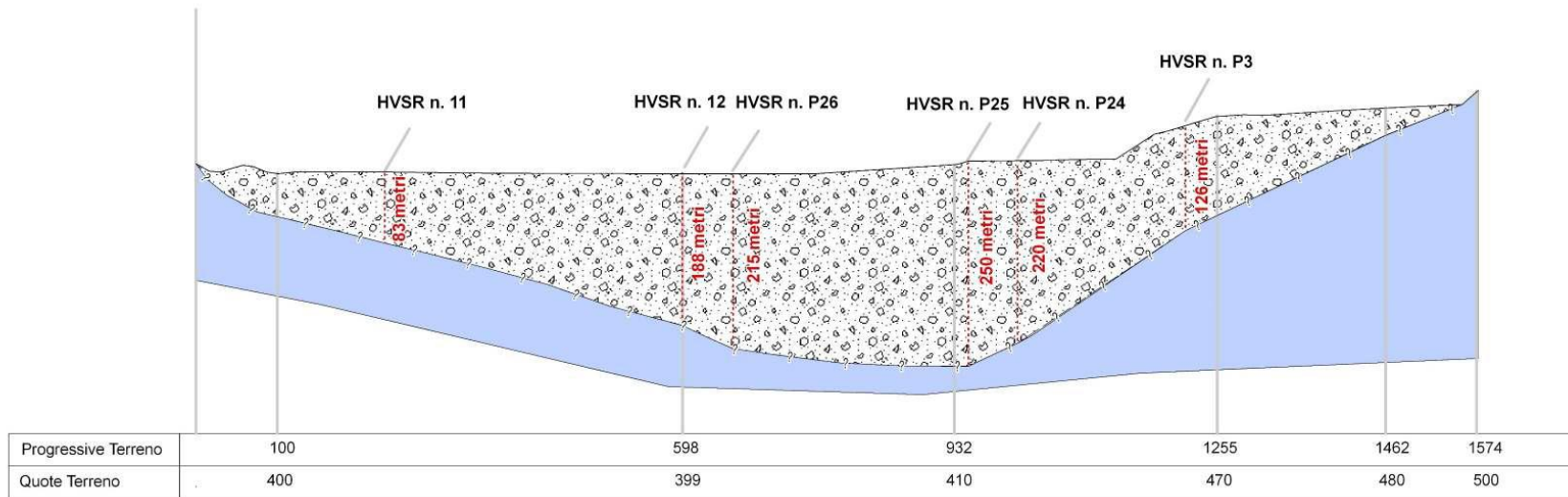
ONO

ESE

S.S. n. 51 di Alemagna

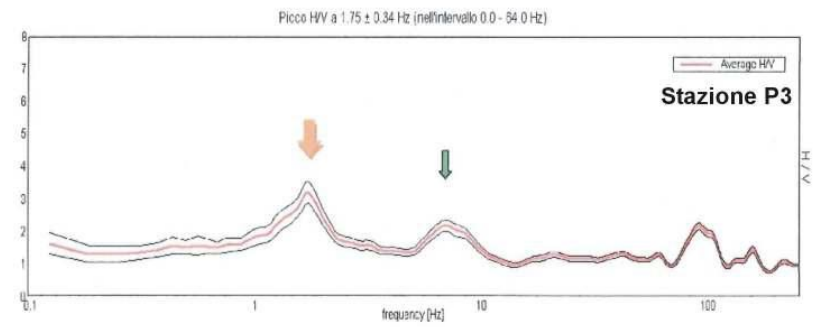
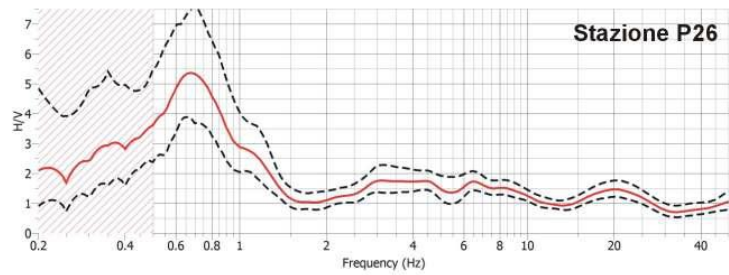
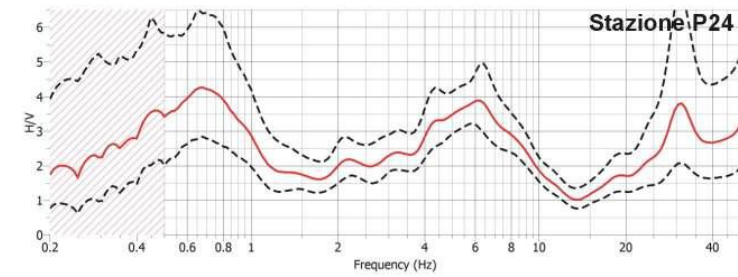
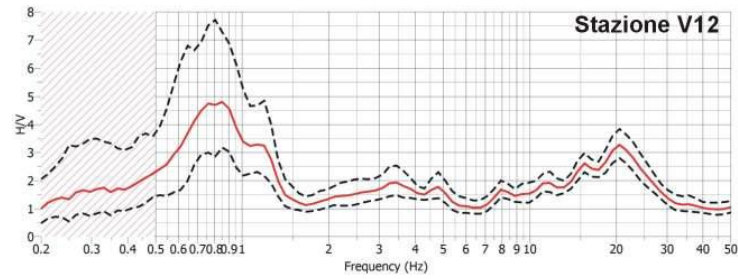
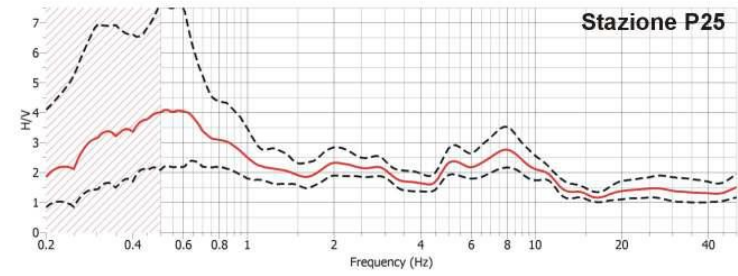
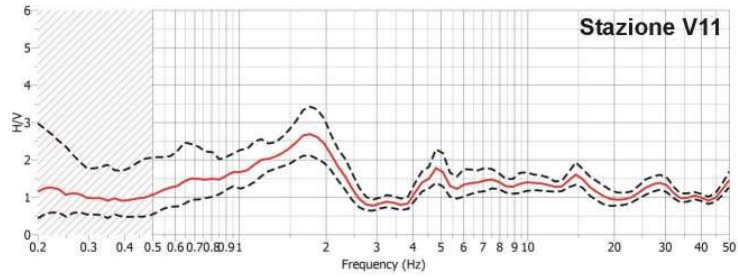
Fiume Piave

Terrazzo di Soverzene

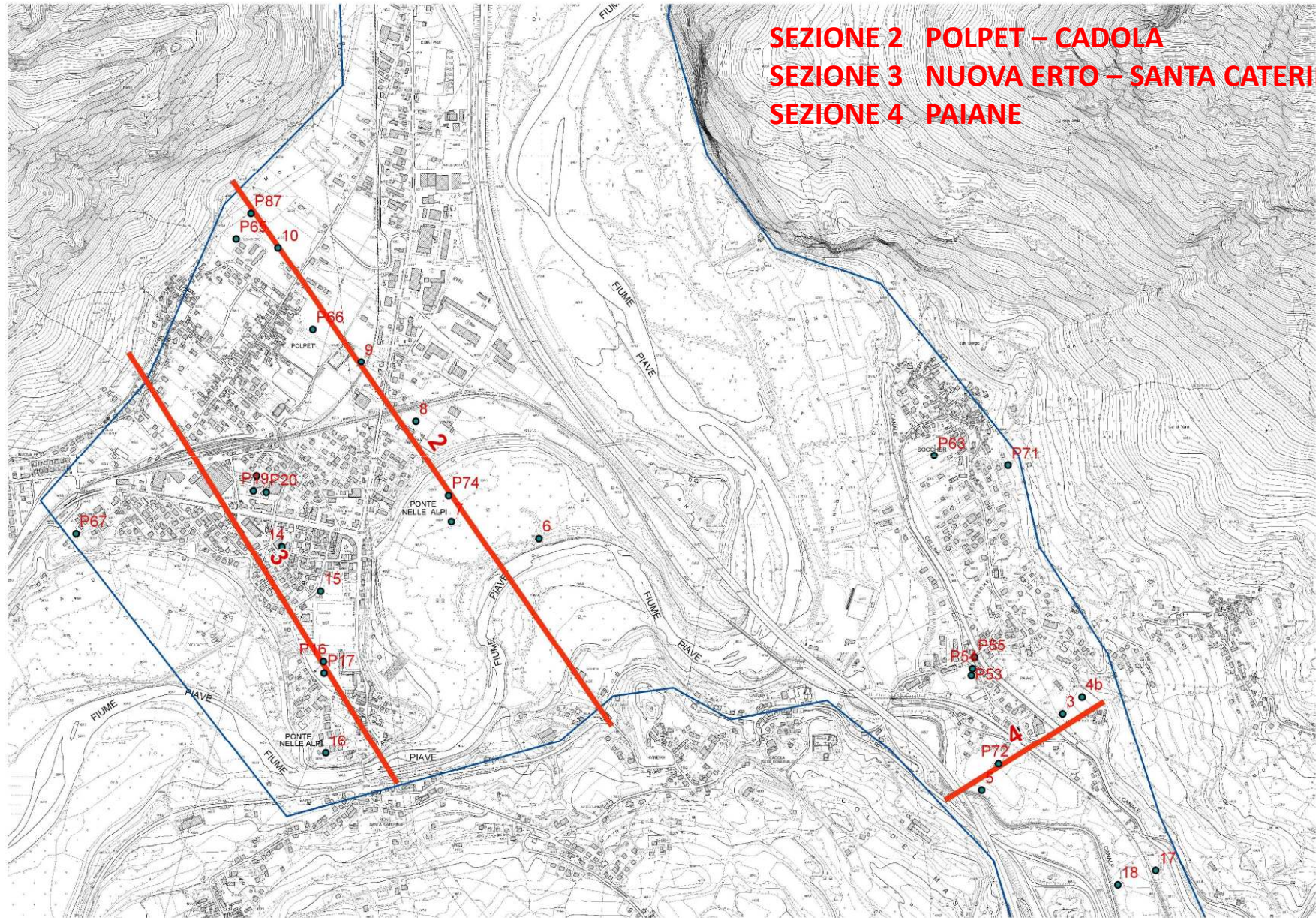


1:5.000

SEZIONE 1 SOVERZENE



SEZIONE 2 POLPET – CADOLA
SEZIONE 3 NUOVA ERTO – SANTA CATERINA
SEZIONE 4 PAIANE



Sezione N. 2 - POLPET - CADOLA

NNO

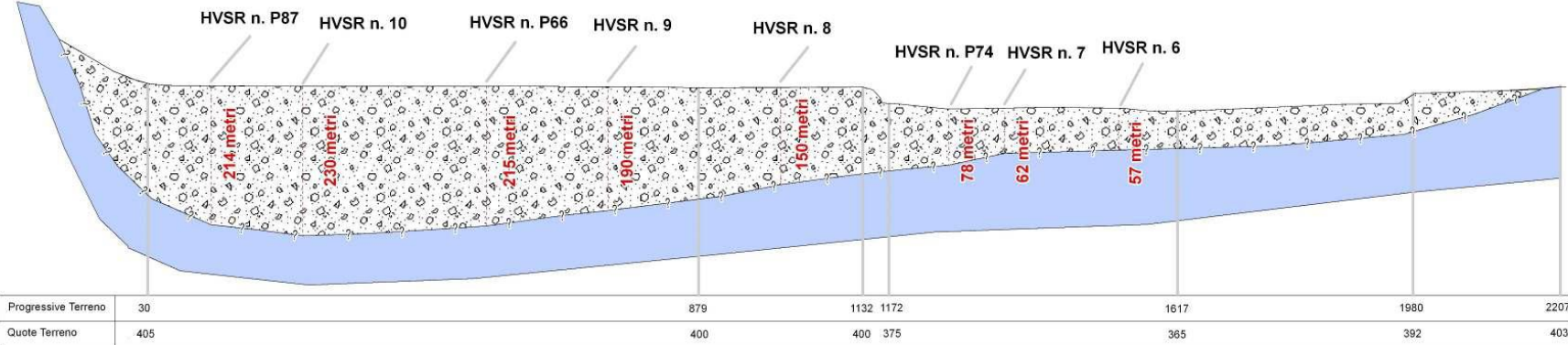
SSE

Polpet

Ponte nelle Alpi

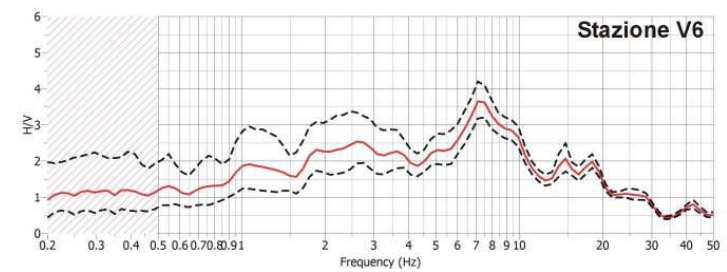
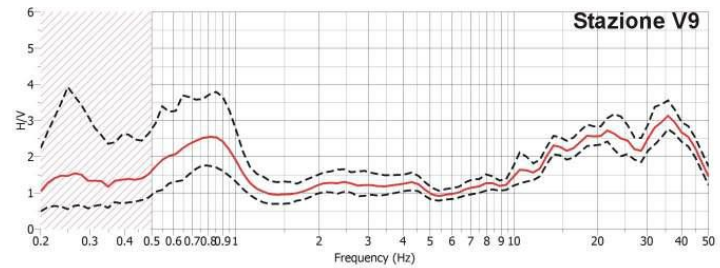
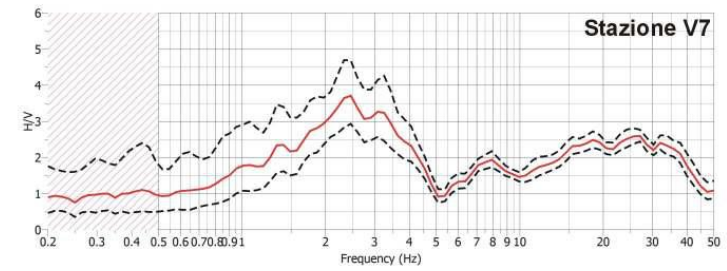
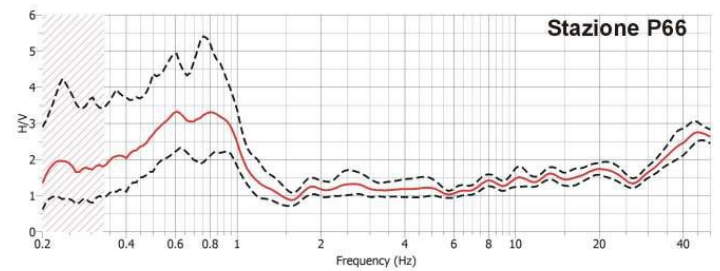
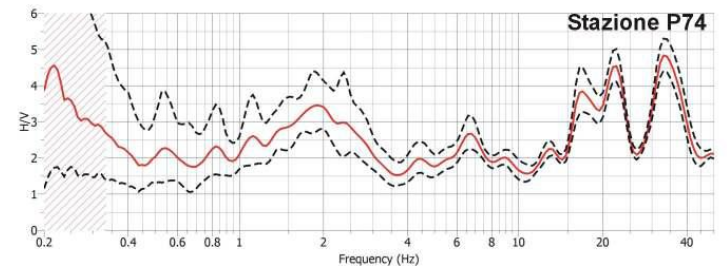
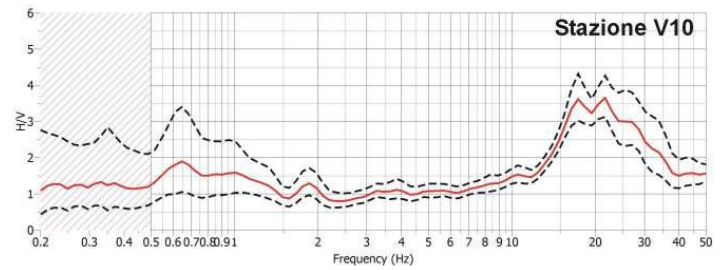
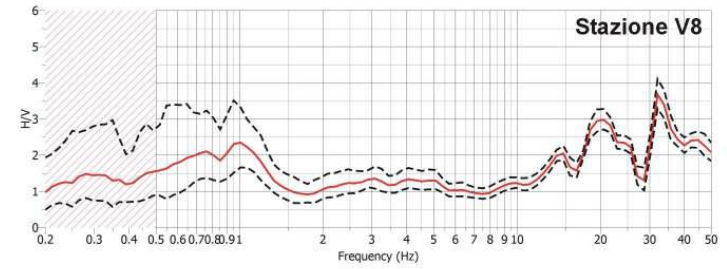
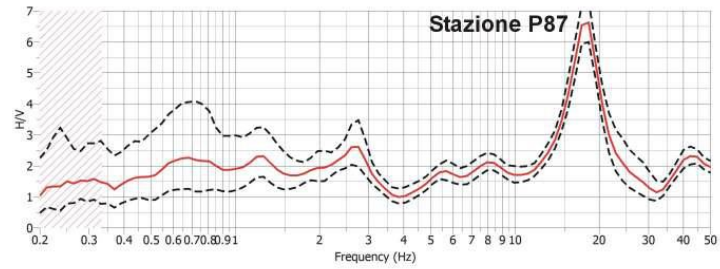
Fiume Piave

Cadola



1:6.000

SEZIONE 2 POLPET



Sezione N. 3 - NUOVA ERTO - SANTA CATERINA

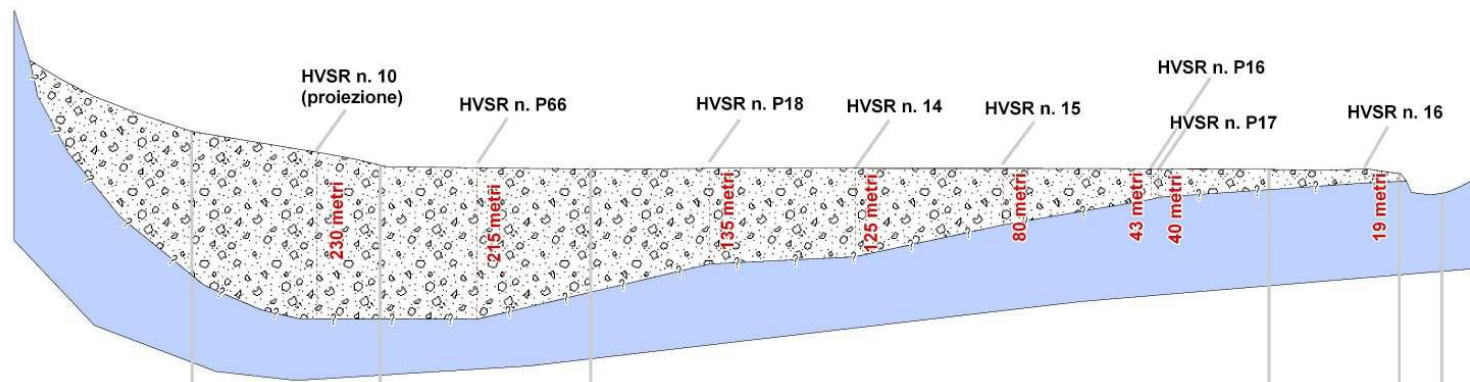
NNO

SSE

Nuova Erto

Ponte nelle Alpi

Fiume Piave



Progressive Terreno	250	515	812	1769	1953	2013	2072
Quote Terreno	450	400	396	395	390	361	390

1:6.000

Sezione N. 4 - PAIANE

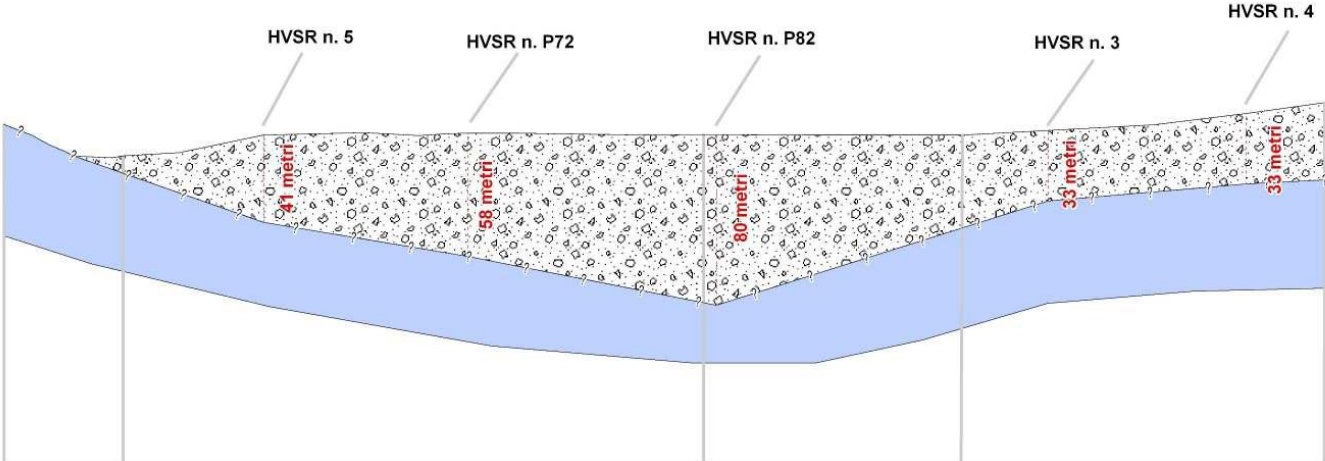
SO

NE

Fiume Rai

Canale Cellina

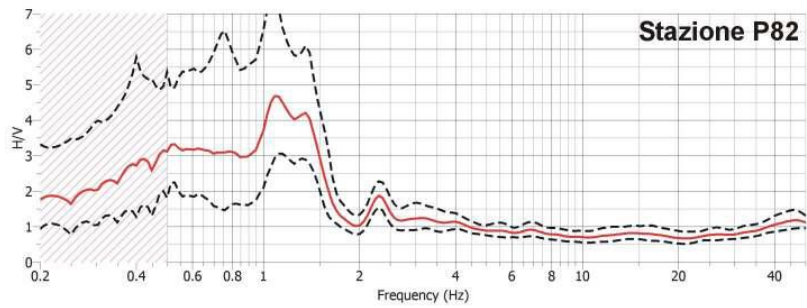
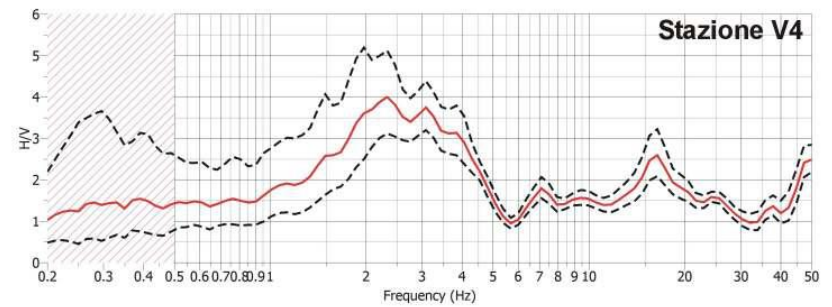
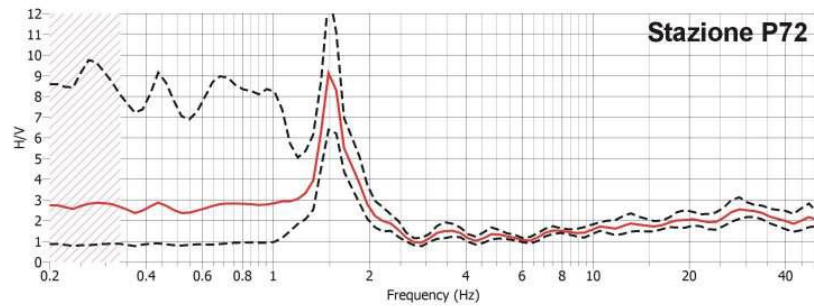
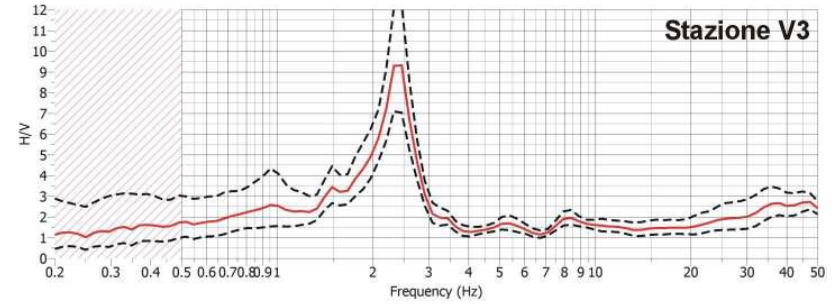
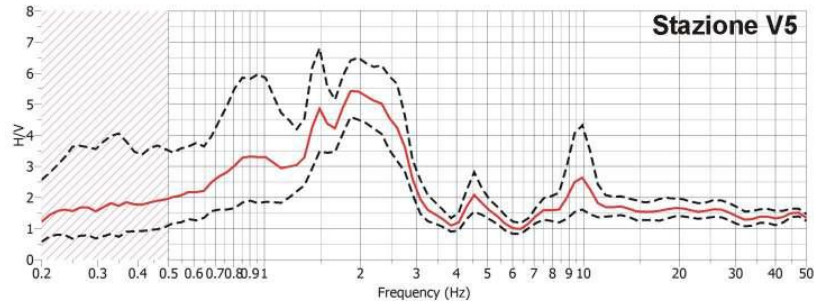
Casa Fontanelle



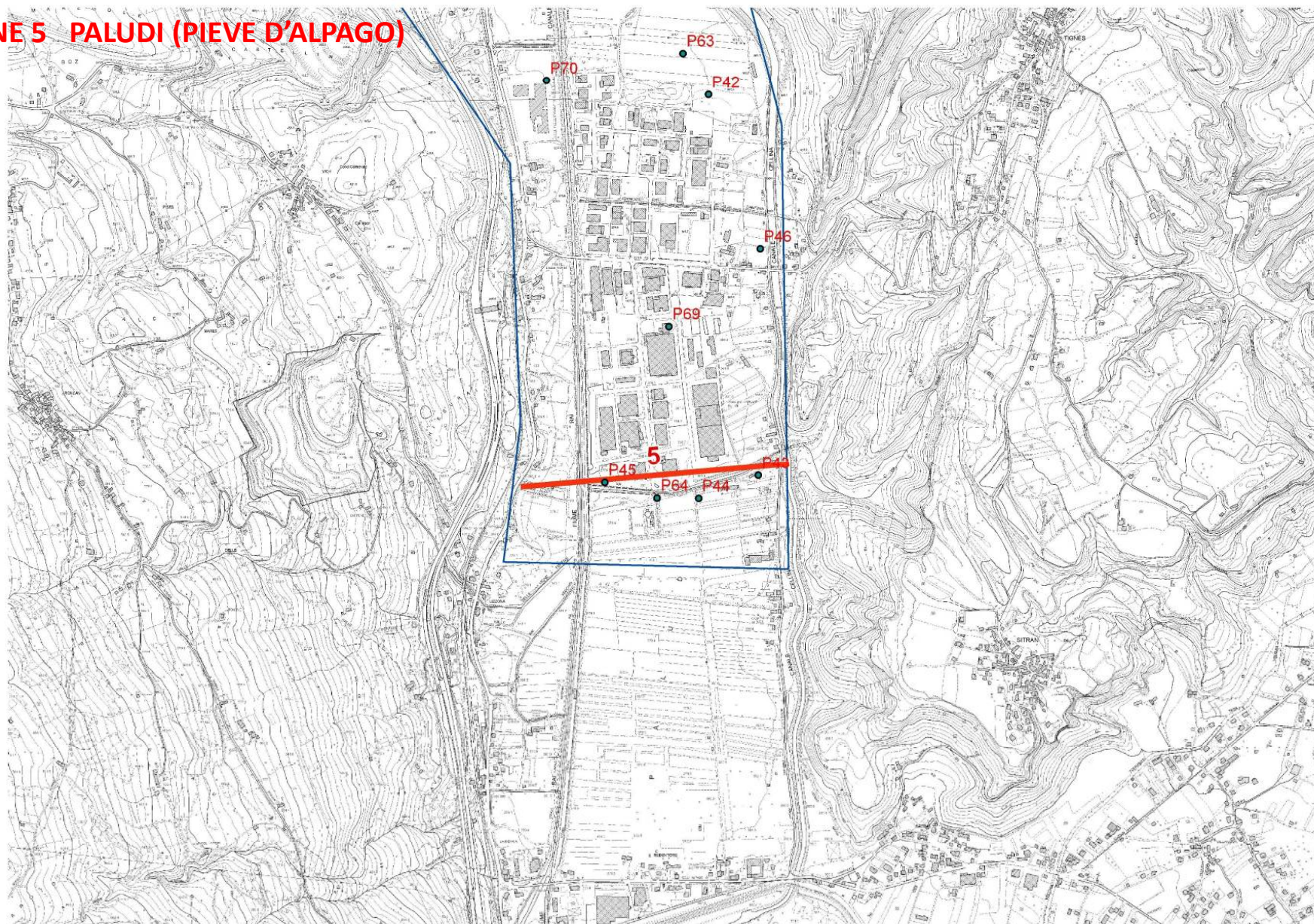
Progressive Terreno	56	329	450	621
Quote Terreno	375	385	385	400

1:2.000

SEZIONE 4 PAIANE



SEZIONE 5 PALUDI (PIEVE D'ALPAGO)



Sezione N. 5 - PALUDI

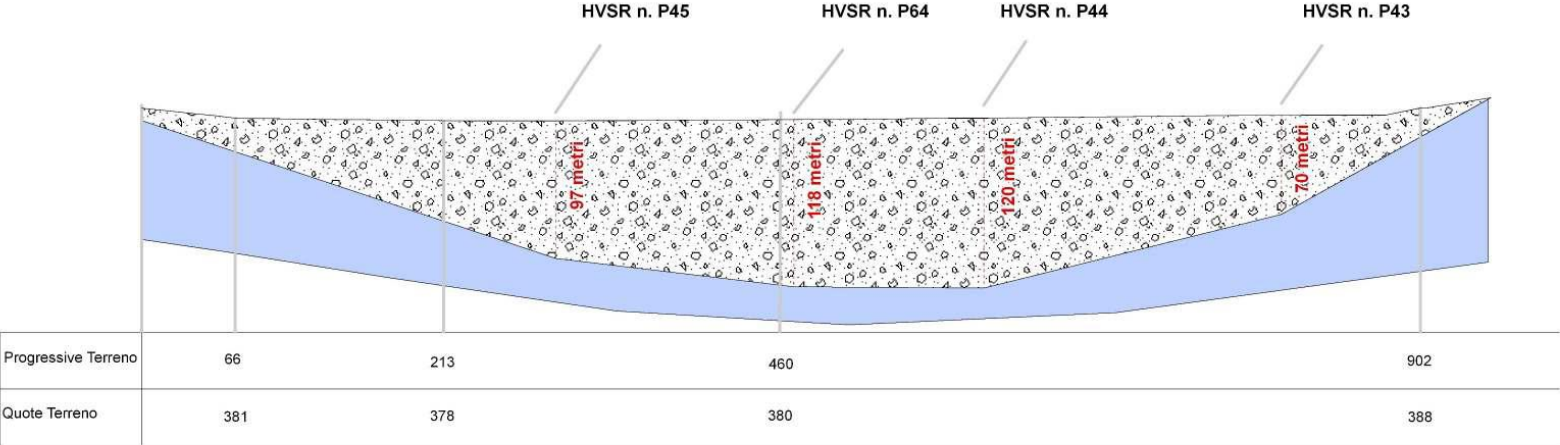
Ovest

Est

S.S. 51 di Alemagna

Fiume Rai

Canale Cellina



1:3.000

SEZIONE 5 PALUDI

